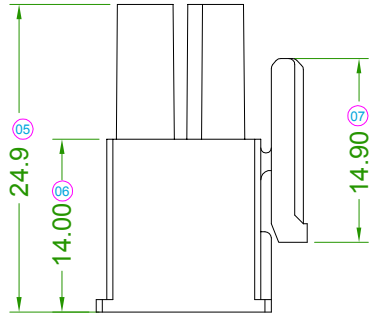
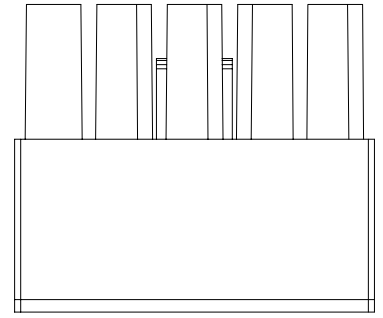
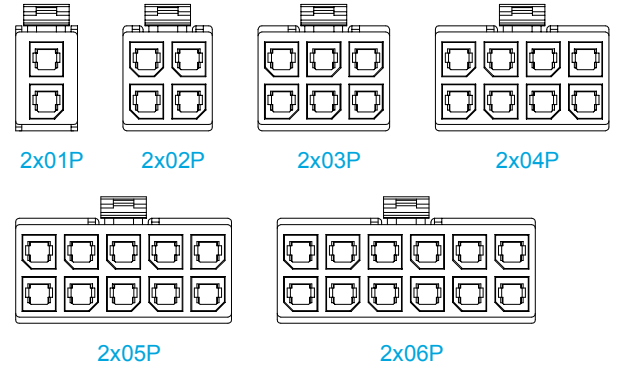


Specifications :

- Voltage rating: 600V AC / DC
- Current rating: 23A AC / DC
- Withstanding voltage: 2200V AC/minute
- Temperature range: -40°C~+105°C
- Insulation resistance: ≥1000MΩ
- Contact resistance: ≤2mΩ
- After environmental testing: ≤10mΩ
- Suitable HLB Terminal: M5700T
- Mates With HLB Wafer: M5700W

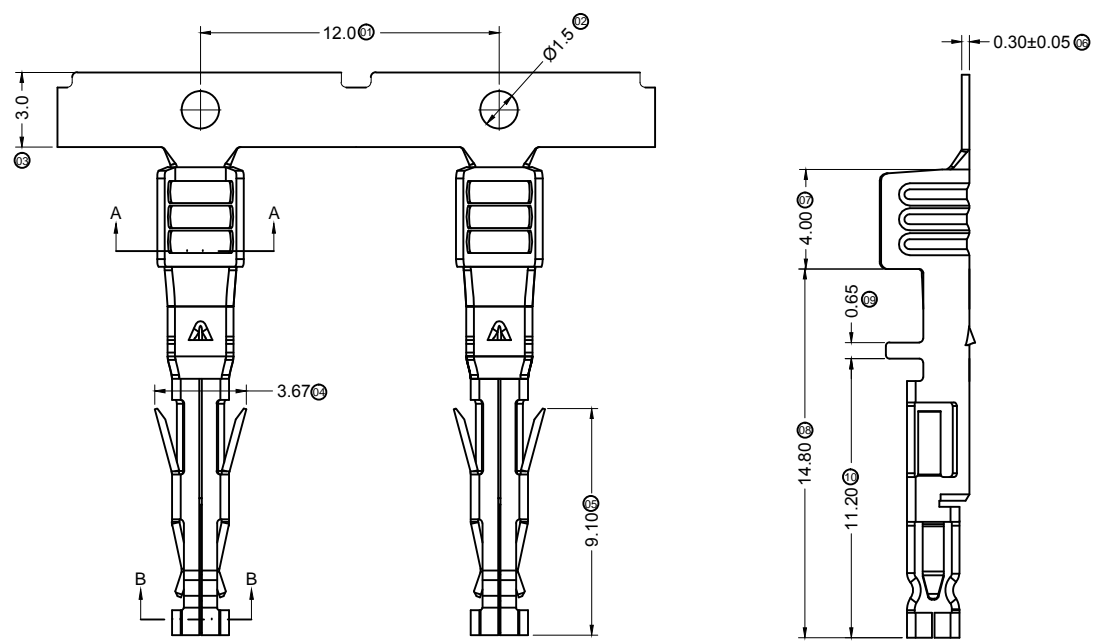


- ① Series No.
- ② Category: M5700H
- ③ Welding Board Angle:
- ④ Row No.-Pin No.: 2*01P~2*06P
- ⑤ Plug the Pin & special No.:
- ⑥ Material: PA66 94V-0
- ⑦ Color: Black



| Poles | Dimensions (mm) | |
|-------|-----------------|--|
| | A | |
| 2*01 | 8.35 | |
| 2*02 | 12.05 | |
| 2*03 | 17.75 | |
| 2*04 | 23.45 | |
| 2*05 | 29.15 | |
| 2*06 | 34.85 | |

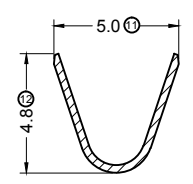
| | | | | | | | | | | | | | | | | | | |
|------------|---------|---------|---------------------|-------------|-------|----------|--|----------|----------|---------|---|------|------|-------|--------------------------------|-----|--|--|
| | | | | | | | GENERAL TOLERANCE X ±0.30 .XX ±0.20 .XXX ±0.10 | | | | 东莞市翰皓精密电子有限公司 Dongguan HanHao Precision Electronics Co.,Ltd | | | | PART NO. M5700H-2*XX | | | |
| | | | | | | | | | | | TITLE 5.70 mm Crimp Style Connectors | | | | | | | |
| 2019/04/22 | A | B | Modify frame format | | | | Jova | Jova Lau | APPROVAL | CHECK | DRAWN | DATA | UNIT | SCALE | NUMBER | REV | | |
| DATE | OLD REV | NEW REV | ECN | DESCRIPTION | CHECK | APPROVAL | PROJECT | Smark | Yu wei | Liu Yan | 2011/05/22 | mm | 1:1 | 8 | B | | | |



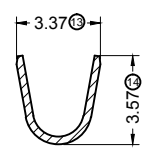
■ Specifications :

- Voltage rating: 600V AC / DC
- Current rating: Table
- Withstanding voltage: 2200V AC/minute
- Temperature range: -40°C~+105°C
- Insulation resistance: ≥1000MΩ
- Contact resistance: ≤5mΩ
- After environmental testing: ≤10mΩ
- Used In HLB Housing: M5700H
- Wire Range: AWG#12-16
- Insulation O.D.: 1.85mm(Max)

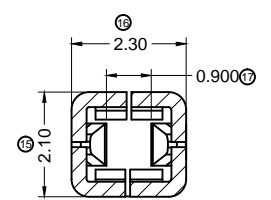
- ① Series Number
- ② Category: M5700T
- ③ Shape:
- ④ Material: High conductive Brass
- ⑤ Plating style:
Contact Area gold 30u"Min, Ni 20u"Min
Contact Area gold 15u"Min, Ni 20u"Min
Bright tin plating 100u" Min Sn, Ni 50u"Min
- ⑥ Plating method: Stamping before plating
- ⑦ Mold No./Mark/Special No.
Low foot (applicable to 14#/16 #)
Height (applicable to 12 #)



SECTION A-A
SCALE 1:1
CONDUCTOR CRIMP 12 AWG

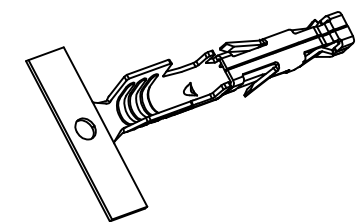


SECTION A-A
SCALE 1:1
CONDUCTOR CRIMP 14/16 AWG

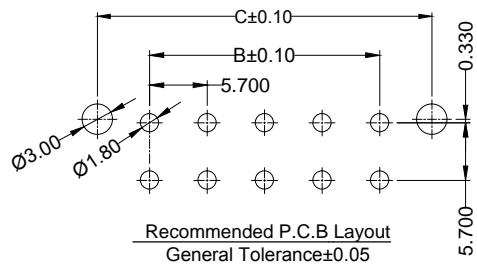
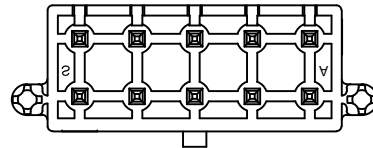
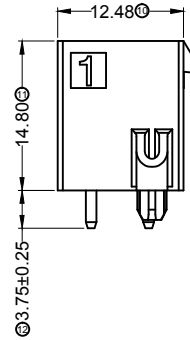
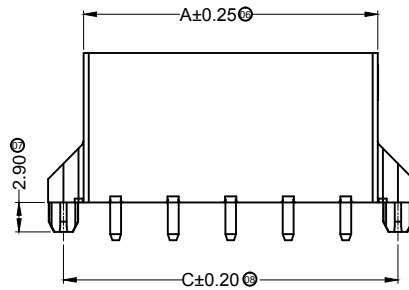
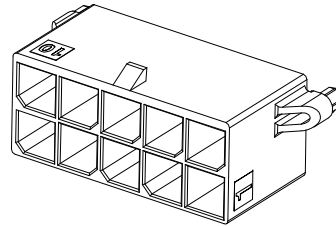
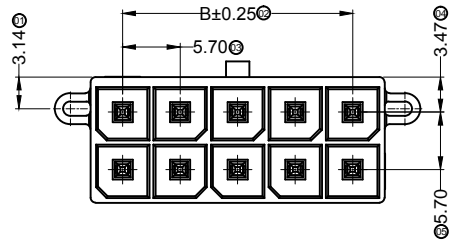


SECTION B-B
SCALE 2:1

| Current rating | | | | | |
|----------------------------|-----------|------|------|------|------|
| AWG & Metric wire size | Ckt. Size | 2 | 4 | 6 | 8-12 |
| 12 AWG, 4.0mm ² | | 21 A | 18 A | 16 A | 14 A |
| 14 AWG, 2.5mm ² | | 19 A | 15 A | 13 A | 11 A |
| 16 AWG, 1.5mm ² | | 15 A | 13 A | 11 A | 10 A |



| | | | | | | | | | | | | | | |
|------------|--|--|--|-------------------------------------|--|--|--|--|--|--|---|--|--|--|
| | | | | GENERAL TOLERANCE | | | 东莞市翰皓精密电子有限公司 Dongguan HanHao Precision Electronics Co.,Ltd | | | | PART NO. M5700T | | | |
| | | | | .X ±0.30 .XX ±0.20 .XXX ±0.10 | | | APPROVAL | | | | TITLE 5.70 mm Crimp Style Connectors | | | |
| 2019/04/22 | | | | A B | | | Modify frame format | | | | Jova Jova Lau | | | |
| DATE | | | | OLD REV NEW REV ECN | | | DESCRIPTION | | | | CHECK APPROVAL | | | |
| | | | | | | | PROJECT | | | | Smark Yu wei Liu Yan 2011/05/22 | | | |
| | | | | | | | | | | | UNIT SCALE NUMBER REV mm 1 1 8 B | | | |

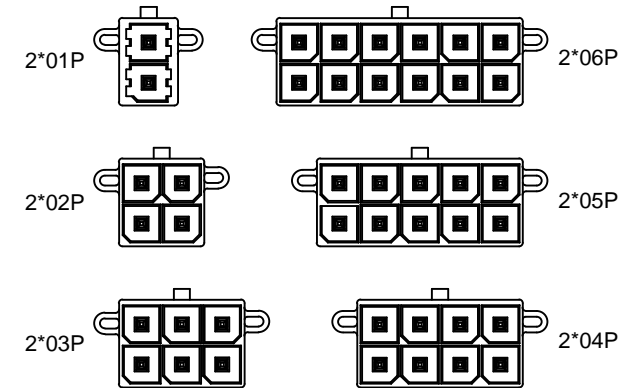


| Poles | Dimensions (mm) | | |
|-------|-----------------|-------|-------|
| | A | B | C |
| 2*01 | 8.35 | 12.34 | 12.34 |
| 2*02 | 12.05 | 5.70 | 16.04 |
| 2*03 | 17.75 | 11.40 | 21.74 |
| 2*04 | 23.45 | 17.10 | 27.44 |
| 2*05 | 29.15 | 22.80 | 33.14 |
| 2*06 | 34.85 | 28.50 | 38.84 |

■ Specifications :

- Voltage rating: 600V AC / DC
- Current rating: 23A AC / DC
- Withstanding voltage: 2200V AC/minute
- Temperature range: -40°C~+105°C
- Insulation resistance:≥1000MΩ
- Contact resistance: ≤2mΩ
- After environmental testing: ≤10mΩ
- Mates With HLB Housing: M5700H

- ① Series No.
- ② Category: M5700WR
- ③ Welding Board Angle: Straight 180°
- ④ Welding Way: DIP
- ⑤ Row No.-Pin No.: 2*02P~2*06P
- ⑥ Plug the Pin & Special No.: High conductive Brass
- ⑦ Material: LCP 94V-0
- ⑧ Plating Category: Matte Tin Plating
- ⑨ Color : Black
- ⑩ Packing Form: Tray



| | | | | | | | | | | | | | | | | | | |
|------------|---------|---------|-----|---------------------|-------|----------|--|--------|---------|------------|--|-------------|-------------|----------|---|--|--|--|
| | | | | | | | GENERAL TOLERANCE .X ±0.30 .XX ±0.20 .XXX ±0.10 | | | | 东莞市翰皓精密电子有限公司 Dongguan HanHao Precision Electronics Co.,Ltd | | | | PART NO. M5700WV-2*XX | | | |
| | | | | | | | PROJECT | | | | APPROVAL CHECK DRAWN DATA | | | | TITLE 5.70 mm Crimp Style Connectors | | | |
| 2019/04/22 | A | B | | Modify frame format | Jova | Jova Lau | Smark | Yu wei | Liu Yan | 2011/05/22 | UNIT mm | SCALE 1: | NUMBER 8 | REV B | | | | |
| DATE | OLD REV | NEW REV | ECN | DESCRIPTION | CHECK | APPROVAL | | | | | | | | | | | | |